

CALNORTH YOUTH CHESS AGE LEVEL COMPETITION INFORMATION

I HAVE REGISTERED MY CHILD, NOW WHAT?

Check <http://CalNorthYouthChess.org/AgeLevel2012/ENTRIES.html> to be sure your child is on the entry list. If you just sent in your entry wait a day or two to be sure we have posted the new names. After you find your child's name on the entry list be sure all the information listed (spelling of name, age and school) is correct. Ratings may not be accurate. They will all be updated a few days before the tournament.

WOOPS, I JUST LEARNED THAT THE TOURNAMENT IS ON SUPER BOWL SUNDAY. I WANT MY CHILD TO COMPETE, BUT HOW CAN WE MISS THE SUPER BOWL?

We have changed the rule about no byes for the last round due to our not knowing that there was such a thing as a Super Bowl. You can take a half point bye for the last round and that should get you home in time to see the Super Bowl or a good portion of it. Depending on your child's results in the other rounds s/he might still win one of the 15 trophies. You would have to pick it up if s/he does. Either way your child should ask for our special medal before s/he leaves. You still must let us know before noon on Saturday, February 4, if you want a Super Bowl bye. Simply e-mail Alan at alan@CalNorthYouthChess.org Once you take a half-point bye you can only request to remove it before the tournament starts. Once the tournament is underway, the bye cannot be changed unless an error was made on our part.

DO I NEED TO BRING ANYTHING WITH ME BESIDES MY CHILD?

No! Chess sets and chess clocks will be provided. You might want to bring some food and especially water for your child to drink during the games. However, the Newark Pavilion will have plenty of food to sell—even breakfast—and, the prices will be cheap. Far far cheaper than the hotels, convention centers or the cinema.

HOW DO I GET TO THE NEWARK PAVILION?

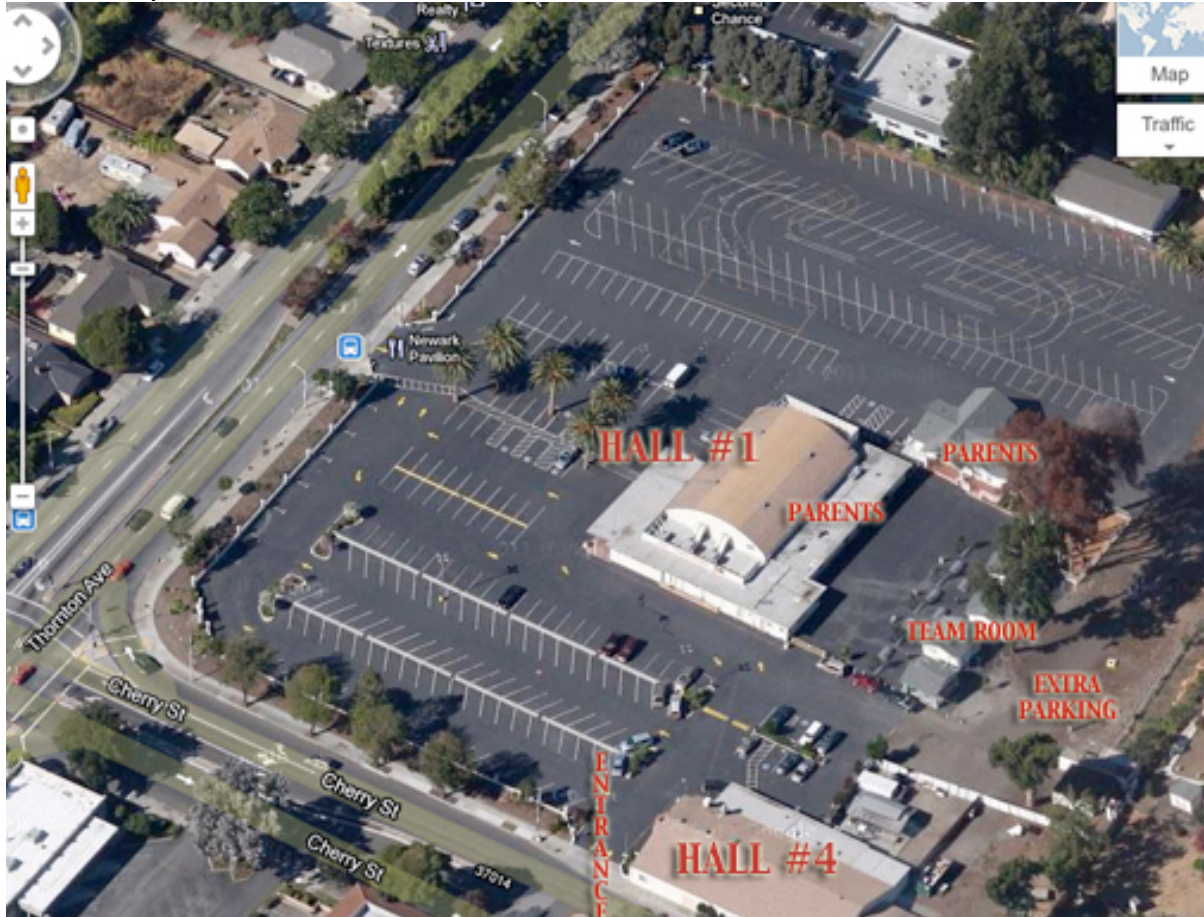
Directions and a link to Google maps is at the information page for the championships. <http://www.CalNorthYouthChess.org/AgeLevel2012>

WHEN SHOULD WE ARRIVE AT THE SITE?

We suggest 9 a.m. so you can locate the building and where your child is playing.

HOW DO I DO THAT?

Here is a photo of the site:



If you enter off of Cherry you will first pass HALL 4. All 10 through 13 year olds, plus the 4-9 Open play in HALL 4. You will see HALL 1 directly ahead of you after passing HALL 4. HALL 1 is where all 4-5, 6, 7, 8, and 9 year olds play. If you enter directly from Thornton you will be looking almost directly at HALL 1 (ages 4-5, 6, 7, 8, 9) and to your right further down is HALL 4 (10, 11, 12, 13, and 4-9 Open). You will see loads of parking and it is free. If by any chance it is full you can park in the dirt lot behind HALL 3. Once you have located your playing hall you will see on the outside walls signs with the age group your child is playing in. Where and who they play you will see posted under the signs. Because of the large number of players we will likely post all the information in a couple of places along the buildings. In case of rain we will have the postings indoors.

WHEN I FIND THE SHEETS WITH THE INFORMATION YOU MENTIONED HOW DO I READ THEM?

The chart will look something like the one below. You will note that the first column lists the player alphabetically by the last name. This is where you should look. The color indicates whether you play

white or black. Then comes the opponent's name and his or her rating. The Board is the Board number that you play on in your section. The 1001 would indicate the first board in the 10 year old section. So if you see 610 you would know that your 6 year old is on board 10 in his section. You will note that one player has a full point bye. This occurs when there is an uneven number of players in the section. The lowest rated player with the lowest score gets the full point bye (equivalent to a win) for that round. Unrated players are generally not given byes in a tournament. There are two other possible wordings for the full point bye. "Please see TD" means that a Tournament Director will try and find an extra game—usually unrated—for the extra player. "Please wait" means the same thing and you should go to see a TD. TD's are in white polo shirts with black trim that have the tournament logo on them and say "Director." There may be other helpers, but on the official TD's can make decisions. Even then they may be limited and may need to call one of the head TD's.

<i>Player</i>	<i>Color</i>	<i>Opponent</i>	<i>Board</i>
Agarwal, Rohan	Black vs.	Ho, Vincent (1184)	on board 1001
Bharath, Ranu	White vs.	Tian, Vincent (1982)	on board 1002
Ho, Vincent	White vs.	Agarwal, Rohan (1778)	on board 1001
Kaushik, Ramya	White vs.	Narayan, Akshay (958)	on board 1004
Kumar, Aditya	White vs.	Tu, Jonathan (1053)	on board 1003
Narayan, Akshay	Black vs	Kaushik, Ramya (1121)	on board 1004
Tian, Vincent	Black vs.	Bharath, Ranu (798)	on board 1002
Tu, Jonathan	Black vs.	Kumar, Aditya (897)	on board 1003
Lakshminarayan, Anand		Full point bye or please see TD or please wait	

Once you know what board you are playing on, please sit at that board at the proper color pieces (white or black--be sure it is the correct color that you are assigned). PLEASE BE SURE YOU ARE IN THE CORRECT SECTION/DIVISION. CHECK THE BOARD NUMBER CAREFULLY. If you are a 7 year old and the board card says 904 you are in a nine year old section. Please move to the correct section and sit at board 704.

I HAVE MY CHILD SEATED—NOW WHAT?

Adults will be asked to leave the playing room once the round is ready to begin. PLEASE DO SO RAPIDLY SO WE CAN GET STARTED ON TIME! Inform the child where you will meet him or her when s/he is done with the game. Please exit the room immediately after wishing your child good luck. Please do not crowd the exit doors. If you do you will be creating a fire hazard and everyone will be removed from exit doors. In HALL 4 the exit doors are obvious. You will be told where you can meet your child in the 7, 8 and 9 year old sections in HALL 1.

Young children (4 to 6 year olds) will be asked to remain in the main hallway of HALL 1 (the front entrance) when their games are completed. Parents WILL NOT be allowed to remain in that area once the games begin. Parents of 4 through 6 year olds will remain outside the doors to the hallway (translation—OUTSIDE THE HALL 1) and a volunteer helper will bring your child to you. This is done for safety and security reasons.

WHERE DO I GO WHILE MY CHILD PLAYS?

If your coach has a Team Room you can head there. Your coach will tell you where it is. In HALL 1 parents will be able to sit on the stage and watch the games from afar. If it gets noisy the parents will be asked to leave the building. The hallway to the stage is narrow & no one will be permitted to hang out in the hallway. Parents also have the option to go to the parent rooms—HALL 2 and HALL 3. In HALL 4 the parents will be able to sit in the back of the room until the games are finished. HALL 2 and HALL 3 and the large outdoors with the picnic tables are available for the parents. If the weather is nice and you have outdoor sport chairs or sport canopies, you could set those up for your team or family.

WHERE DOES MY CHILD PLAY WHEN HE FINISHES THE FIRST GAME?

You will go to the same posting area where you found your child's first playing assignment and you will find his/her next opponent and where to play. This may take us 15 or two minutes to post after all the games are done. For new comers to chess events, you should be aware that your child will play all the games. This is not a knock out competition. The computer will select opponents based upon the number of wins or losses each player has. Translation: If your child won two games and lost one s/he will play another child who won two games and lost one. Sometimes an exception occurs because there isn't someone with the same score.

WHAT IF A PROBLEM ARISES?

If it is a problem that deals with an aspect of the tournament play/rules please see National Tournament Director John McCumiskey who is the Chief Director for the event. In HALL 1 you can also speak with Head Director Robert Blatt. Look for Director David Lee in HALL 4.

If it is a physical problem with the facilities look for the organizer, Alan Kirshner.

Do not speak to the computer operators if any games are in process or about to begin. Any disturbance of the operation of the event can cause a parent, a coach or a spectator to be removed from the facilities.

Children/players of a coach or parent will not be removed during a game in progress. This would be unfair to the players who should not be penalized for the actions of an adult. A team can be removed from the standings of the Team competition if a coach continues disturbing the tournament.

EXTRA GOODIES:

Toby Chess Equipment will be on site to sell all kinds of chess paraphernalia.

If you have further questions or concerns, please send an e-mail to info@CalNorthYouthChess.org or call Alan at (510) 659-0358. This is a landline and cannot be used on the day of the event. If Alan's cell phone is on—and it should not be if he is in the playing area--he can be reached at (510) 468-6307.

Enjoy & Good Luck!--Alan M. Kirshner, Ph.D., Organizer for CalNorth Youth Chess 2012 Championships.